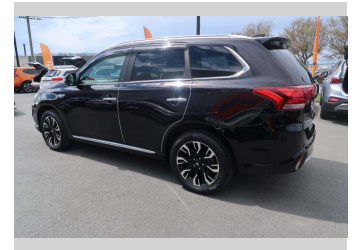
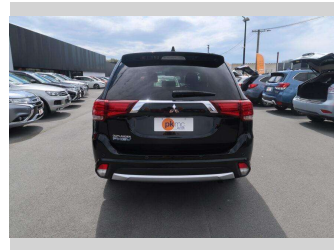
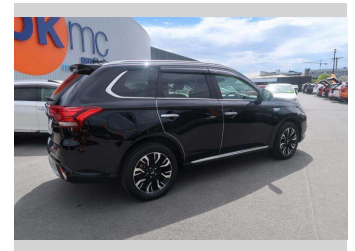


# 2015 Mitsubishi Outlander PHEV 4WD G



**Purchase Price** **\$27,950**

Includes GST  
Excludes on-road costs of \$550

Finance may be available on this vehicle. Ask one of our friendly staff for more information.

Gain peace of mind with Mechanical Breakdown Insurance. **Ask us how.**

- Top features**
- » 4 Wheel Drive
  - » Air Bag x 6
  - » Air Conditioning
  - » Anti Lock Braking Syst...
  - » Central Locking
  - » Central Locking
  - » Child seat anchor poin...
  - » Climate Control
  - » Cruise Control
  - » Electric Mirrors
  - » Factory Alloy Wheels
  - » Heated Seats
  - » Parking Sensors
  - » Power Steer
  - » Power Windows
  - » Push Button Start
  - » Radio
  - » Rear Wiper

Body Style  
**5 door, SUV / 4x4**

Odometer  
**56,410 km**

Engine  
**2000 cc**

Fuel Type  
**Hybrid**

Transmission  
**Automatic**

Wheels  
-

VIN  
**7AT0CJ3MX23306224**

Interior  
-

Safety



Based on 2023 UCSR rating for 12-21 models

Reg No.

-

Ext Colour  
**Black**

History

-

Seats  
**5 seats, Half Leather / Cloth**

CO2 Emissions  
**★★★★☆**  
**43 grams/km**

Energy Economy  
**★★★★☆☆**

**Annual fuel cost not available**  
**6.1L per 100km**

Actual figures and cost per year will vary based on proportion of hybrid mode driving and battery charging schedule. Emissions and Energy Economy figures standardised to 3P WLTP.

**Stock ID: 2626**



Paul Kelly Motor Company - 4WD | Phone 03 365 9204 | Email 85@paulkelly.co.nz  
85 Moorhouse Avenue, Addington, Christchurch 8011, New Zealand  
www.paulkelly.co.nz