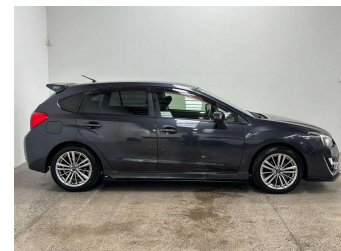


2016 Subaru Impreza 2.0i 4WD S



Purchase Price **\$15,990**
Includes GST
 Excludes on-road costs of \$550

Finance may be available on this vehicle. Ask one of our friendly staff for more information.

Gain peace of mind with Mechanical Breakdown Insurance. **Ask us how.**

Top features
 None Listed

Body Style
Hatchback

Odometer
95,000 km

Engine
2000 cc, Internal Combustion


Fuel Type
Petrol

Transmission
Automatic

Wheels
 -

VIN
7AT0GF09X26116597

Interior
 -

Safety

 Based on 2025 UCSR rating for 12-16 models

Reg No.
 -

Ext Colour
Grey

History
 -

Seats
 -

CO2 Emissions
★★★★☆
163 grams/km

Energy Economy
★★☆☆☆
Annual fuel cost of \$2,740
7L per 100km

Cost per year is an estimate based on petrol price of \$2.80 per litre and an average distance of 14000 km. Emissions and Energy Economy figures standardised to 3P WLTP.

Stock ID: 5741