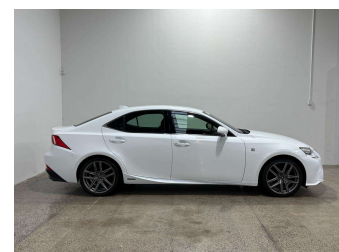


# 2013 Lexus IS 300H F Sport



**Purchase Price**

**\$25,990**

Includes GST  
Excludes on-road costs of \$550

Finance may be available on this vehicle. Ask one of our friendly staff for more information.

Gain peace of mind with Mechanical Breakdown Insurance. **Ask us how.**

- Top features**
- » Air Bag x 8
  - » Anti Lock Braking Syst...
  - » Auto Lights
  - » Bluetooth
  - » Central Locking
  - » Central Locking
  - » Child seat anchor poin...
  - » Cruise Control
  - » Dual Zone Climate Cont...
  - » Electric Mirrors (Retr...
  - » Factory Alloy Wheels
  - » Heated Seats
  - » Leather Trim
  - » Paddle Shift
  - » Parking Sensors
  - » Parking Sensors
  - » Power Steer
  - » Power Windows

Body Style  
**Sedan**

Odometer  
**118,025 km**

Engine  
**2500 cc, Hybrid**

Fuel Type  
**Petrol**


Transmission  
**Automatic**

Wheels  
-

VIN  
**7AT0B013X25004802**

Interior  
**Red, Leather**

Safety



Based on 2024 VSRR rating

Reg No.  
-

Ext Colour  
**Pearl**

History  
-

Seats  
**Leather**

CO2 Emissions  
**★★★★☆**  
**122 grams/km**

Energy Economy  
**★★★★☆☆**  
**Annual fuel cost of \$2,040**  
**5.2L per 100km**

Cost per year is an estimate based on petrol price of \$2.80 per litre and an average distance of 14000 km. Emissions and Energy Economy figures standardised to 3P WLTP.

**Stock ID: 5168**



Paul Kelly Motor Company | Phone 03 377 8500 | Email sales@paulkelly.co.nz  
30 Moorhouse Avenue, Addington, Christchurch 8011  
www.paulkelly.co.nz