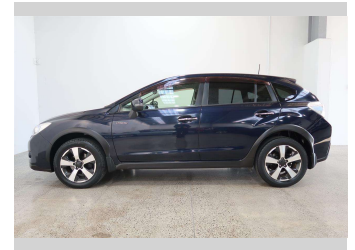
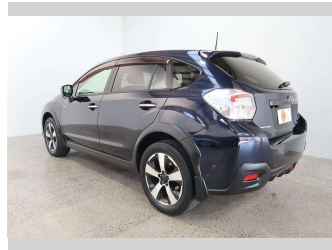
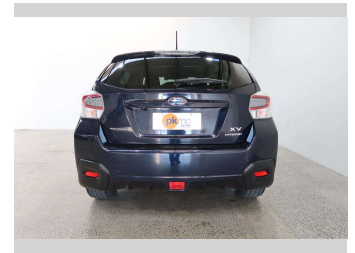
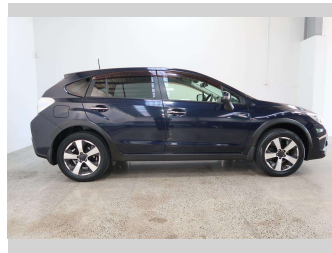


2014 Subaru XV 2.0I-L 4WD



Purchase Price

\$15,990

Includes GST
Excludes on-road costs of \$550

Finance may be available on this vehicle. Ask one of our friendly staff for more information.

Gain peace of mind with Mechanical Breakdown Insurance. **Ask us how.**

Top features

- » Air Bag
- » Air Conditioning
- » Anti Lock Braking Syst...
- » Auto Lights
- » CD Player
- » Central Locking
- » Central Locking
- » Child seat anchor poin...
- » Climate Control
- » Cruise Control
- » Electric Mirrors (Retr...
- » Factory Alloy Wheels
- » Fog Lights
- » Forward Collision Warn...
- » Lane Departure Warning
- » Paddle Shift
- » Power Steer
- » Power Windows

Body Style

5 door, SUV / 4x4

Odometer

114,400 km

Engine

2000 cc

Fuel Type

Hybrid

Transmission

Automatic, All Wheel Drive

Wheels

Factory Alloys

VIN

7AT0GF09X24011463

Interior

-

Safety



Based on 2023 UCSR rating for 12-16 models

Reg No.

-

Ext Colour

Blue

History

-

Seats

5 seats

CO2 Emissions

★★★★☆

137 grams/km

Energy Economy

★★★★☆☆

Annual fuel cost of \$2,310

5.9L per 100km

Cost per year is an estimate based on petrol price of \$2.80 per litre and an average distance of 14000 km. Emissions and Energy Economy figures standardised to 3P WLTP.

Stock ID: 4571



Paul Kelly Motor Company | Phone 03 377 8500 | Email 30@paulkelly.co.nz
30 Moorhouse Avenue, Addington, Christchurch 8011
www.paulkelly.co.nz