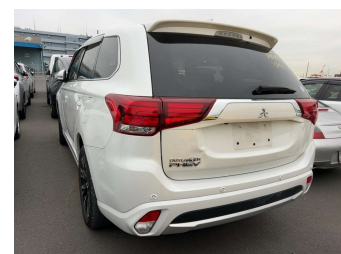


# 2016 Mitsubishi Outlander 2.0 PHEV G



**Purchase Price** **\$22,990**

Includes GST  
Excludes on-road costs of \$550

Finance may be available on this vehicle. Ask one of our friendly staff for more information.

Gain peace of mind with Mechanical Breakdown Insurance. **Ask us how.**

**Top features**

None Listed

Body Style  
**SUV**

Odometer  
**102,000 km**

Engine  
**2000 cc, Plug-In Hybrid**

Fuel Type  
**Electricity**


Transmission  
**Automatic**

Wheels  
-

VIN  
-

Interior  
-

Safety



Based on 2025 UCSR rating for 12-21 models

Reg No.  
-

Ext Colour  
**Pearl**

History  
-

Seats  
-

CO2 Emissions  
**★★★★☆**  
**43 grams/km**

Energy Economy  
**★★★★☆☆**  
**Annual fuel cost of \$2,920**  
**6.1L per 100km**

Cost per year is an estimate based on petrol price of \$2.80 per litre and an average distance of 14000 km. Includes Road User Charges (RUC). Emissions and Energy Economy figures standardised to 3P WLTP.

**Stock ID: 5791**



Paul Kelly Motor Company | Phone 03 377 8500 | Email sales@paulkelly.co.nz  
30 Moorhouse Avenue, Addington, Christchurch 8011  
www.paulkelly.co.nz