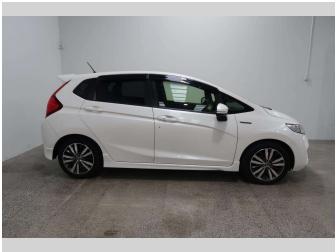
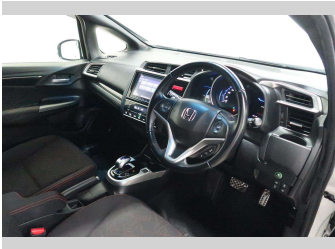
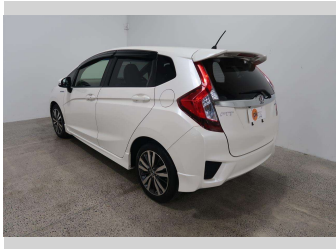


2016 Honda Fit S HYBRID



Purchase Price

\$13,990

Includes GST

Excludes on-road costs of \$550

Finance may be available on this vehicle. Ask one of our friendly staff for more information.

Gain peace of mind with Mechanical Breakdown Insurance. **Ask us how.**

Top features

» ABS Braking w/ EBD

» Air Bag x 8

» Air Conditioning

» Auto Lights

» Bluetooth

» Body Kit (Aero)

» Body Kit (Factory)

» CD Player

» Central Locking

» Central Locking

» Child seat anchor poin...

» Cruise Control

» Cruise Control

» Dual Zone Climate Cont...

» Electric Mirrors (Retr...

» ESC

» Factory Alloy Wheels

» Fog Lights

Body Style

Hatchback

Odometer

99,640 km

Engine

1500 cc, Hybrid

Fuel Type

Petrol

Transmission

Automatic

Wheels

-


VIN

7AT08G2YX25212609

Interior

Black & Orange

Safety



Based on 2024 UCSR rating for 14-20 models

Reg No.

-

Ext Colour

Pearl

History

-

Seats

Cloth

CO2 Emissions

★★★★☆

96 grams/km

Energy Economy

★★★★☆☆

Annual fuel cost of \$1,610

4.1L per 100km

Cost per year is an estimate based on petrol price of \$2.80 per litre and an average distance of 14000 km. Emissions and Energy Economy figures standardised to 3P WLTP.

Stock ID: 5172



Paul Kelly Motor Company | Phone 03 377 8500 | Email sales@paulkelly.co.nz
30 Moorhouse Avenue, Addington, Christchurch 8011
www.paulkelly.co.nz