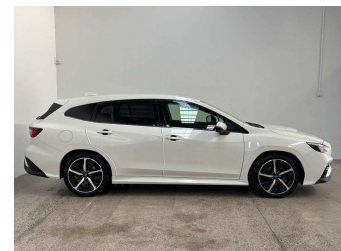


# 2021 Subaru Levorg GT-H AWD 4WD



**Purchase Price** **\$33,990**  
Includes GST  
 Excludes on-road costs of \$550

Finance may be available on this vehicle. Ask one of our friendly staff for more information.

Gain peace of mind with Mechanical Breakdown Insurance. **Ask us how.**

**Top features**  
 None Listed

Body Style  
**Station Wagon**

Odometer  
**54,693 km**

Engine  
**1800 cc, Internal Combustion**


Fuel Type  
**Petrol**

Transmission  
**Automatic**

Wheels  
 -

VIN  
**7AT0GF22X26021170**

Interior  
 -

Safety  
  
 Based on 2025 VSRR rating

Reg No.  
 -

Ext Colour  
**Pearl White**

History  
 -

Seats  
**5 seats**

CO2 Emissions  
**★★★★☆**  
**171 grams/km**

Energy Economy  
**★★☆☆☆**  
**Annual fuel cost of \$2,900**  
**7.4L per 100km**

Cost per year is an estimate based on petrol price of \$2.80 per litre and an average distance of 14000 km. Emissions and Energy Economy figures standardised to 3P WLTP.

**Stock ID: 5655**



Paul Kelly Motor Company | Phone 03 377 8500 | Email sales@paulkelly.co.nz  
 30 Moorhouse Avenue, Addington, Christchurch 8011  
 www.paulkelly.co.nz