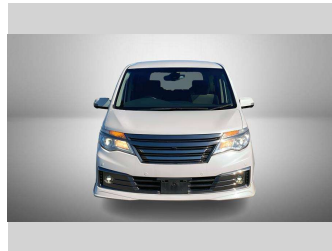


2015 Nissan Serena S-HYBRID B



Purchase Price

\$14,990

Includes GST
Excludes on-road costs of \$550

Finance may be available on this vehicle. Ask one of our friendly staff for more information.

Gain peace of mind with Mechanical Breakdown Insurance. **Ask us how.**

Top features

- » 7 Seater
- » Air Bag
- » Anti Lock Braking System
- » Central Locking
- » Climate Control
- » Cruise Control
- » Factory Alloy Wheels
- » Power Steer

Body Style

5 door, Van

Odometer

100,098 km

Engine

2000 cc, Hybrid

Fuel Type

Hybrid

Transmission

Automatic

Wheels

-

VIN

7AT0DH3FX24125412

Interior

Black

Safety



Based on 2023 VSRR rating

Reg No.

-

Ext Colour

Pearl

History

-

Seats

7 seats, Cloth

CO2 Emissions

★★★★☆

171 grams/km

Energy Economy

★★☆☆☆☆

**Annual fuel cost of \$2,860
7.3L per 100km**

Cost per year is an estimate based on petrol price of \$2.80 per litre and an average distance of 14000 km. Emissions and Energy Economy figures standardised to 3P WLTP.

Stock ID: 4484



Paul Kelly Motor Company | Phone 03 377 8500 | Email 30@paulkelly.co.nz
30 Moorhouse Avenue, Addington, Christchurch 8011
www.paulkelly.co.nz