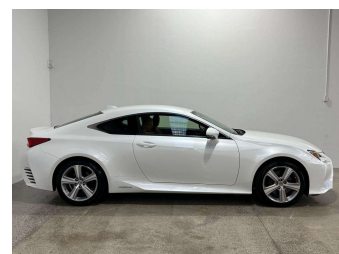


2015 Lexus RC300h



Purchase Price **\$31,990**
Includes GST
 Excludes on-road costs of \$550

Finance may be available on this vehicle. Ask one of our friendly staff for more information.

Gain peace of mind with Mechanical Breakdown Insurance. **Ask us how.**

Top features
 None Listed

Body Style
Coupe

Odometer
101,980 km

Engine
2500 cc, Hybrid


Fuel Type
Electricity

Transmission
Automatic

Wheels
 -

VIN
7AT0B02HX26001005

Interior
 -

Safety

 Based on 2025 VSRR rating

Reg No.
 -

Ext Colour
Pearl White

History
 -

Seats
 -

CO2 Emissions
★★★★☆
122 grams/km

Energy Economy
★★★★☆☆
Annual fuel cost of \$2,040
5.2L per 100km

Cost per year is an estimate based on petrol price of \$2.80 per litre and an average distance of 14000 km. Emissions and Energy Economy figures standardised to 3P WLTP.

Stock ID: 5630



Paul Kelly Motor Company | Phone 03 377 8500 | Email sales@paulkelly.co.nz
 30 Moorhouse Avenue, Addington, Christchurch 8011
 www.paulkelly.co.nz