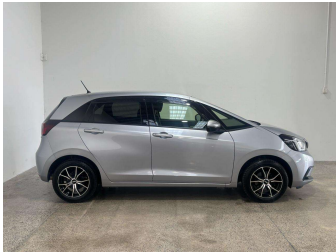


2020 Honda Fit e-HEV 1.5 Hybrid



Purchase Price

\$17,990

Includes GST
Excludes on-road costs of \$550

Finance may be available on this vehicle. Ask one of our friendly staff for more information.

Gain peace of mind with Mechanical Breakdown Insurance. **Ask us how.**

Top features

None Listed

Body Style

Hatchback

Odometer

66,250 km

Engine

1500 cc, Hybrid

Fuel Type

Petrol

Transmission

Automatic

Wheels

-

VIN

7AT08G2YX25017255

Interior

-

Safety



Based on 2024 VSRR rating

Reg No.

-

Ext Colour

Silver

History

-

Seats

-

CO2 Emissions

★★★★★☆☆

79 grams/km

Energy Economy

★★★★★☆☆

Annual fuel cost of \$1,330
3.4L per 100km

Cost per year is an estimate based on petrol price of \$2.80 per litre and an average distance of 14000 km. Emissions and Energy Economy figures standardised to 3P WLTP.

Stock ID: 5234



Paul Kelly Motor Company | Phone 03 377 8500 | Email sales@paulkelly.co.nz
30 Moorhouse Avenue, Addington, Christchurch 8011
www.paulkelly.co.nz