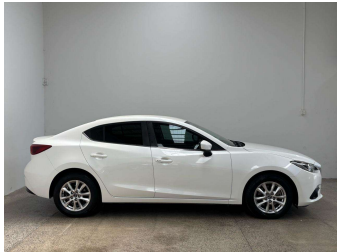


# 2013 Mazda Axela HYBRID



Purchase Price

\$15,990

Includes GST, Registration & Licensing

Finance may be available on this vehicle. Ask one of our friendly staff for more information.

Gain peace of mind with Mechanical Breakdown Insurance. **Ask us how.**

Top features

None Listed

Body Style

Sedan

Odometer

85,300 km

Engine

2000 cc, Hybrid

Fuel Type

Electricity

Transmission

Automatic

Wheels

-


VIN

7AT0C13JX21101921

Interior

Black, Cloth

Safety

  
Based on 2025 UCSR rating for 13-19 models

Reg No.

PGC925

Ext Colour

White

History

-

Seats

-

CO2 Emissions

★★★★☆  
97 grams/km

Energy Economy

★★★★☆☆  
Annual fuel cost of \$1,610  
4.1L per 100km

Cost per year is an estimate based on petrol price of \$2.80 per litre and an average distance of 14000 km. Emissions and Energy Economy figures standardised to 3P WLTP.

Stock ID: 5551



Paul Kelly Motor Company | Phone 03 377 8500 | Email sales@paulkelly.co.nz  
30 Moorhouse Avenue, Addington, Christchurch 8011  
www.paulkelly.co.nz